



## IN SITU HYPOCHLORITE GENERATOR

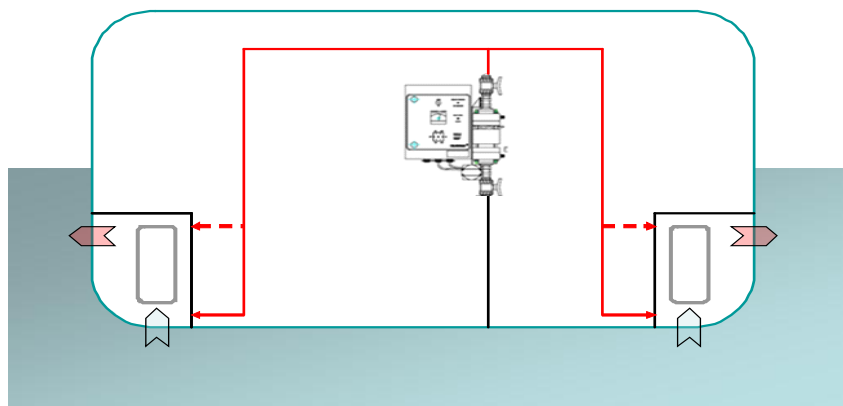
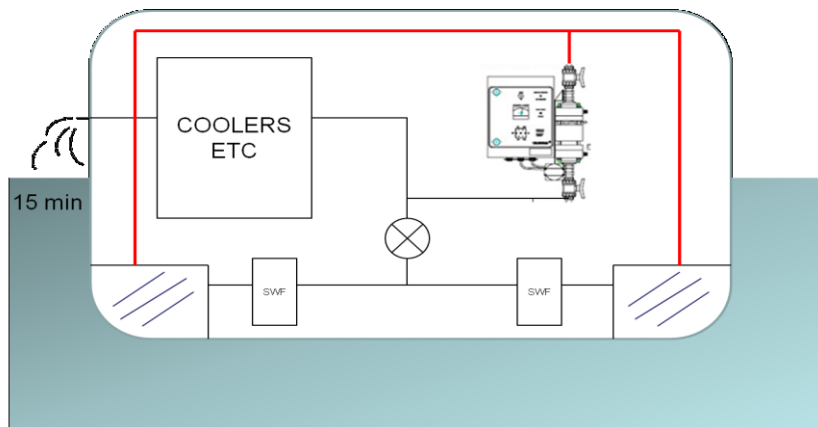


In situ generation of sodium Hypochlorite will efficiently keep a sea water system incl sea water chest, cooler/plates etc free from marine growth and slime.

The Hypochlorite is generated by electrolysis of sea water, using titanium/platinum electrodes.  
Electrodes should be replaced every four years, the unit itself require a rinse every year.

The hypochlorite concentration in the water is very low, but sufficient to eliminate marine growth and the formation of bacteria. Bacteria will cause pitting and will also act as a strong catalyst in all corrosion processes.

Hypochlorite is an unstable chemical compound and the water will return to its original salt water condition once it is discharged from the ship.



Model	Flow 0,5 ppm m3/hr	Flow 0,3 ppm m3/hr	Hypochl prod g/hr	Bypass flow m3/hr	EI (A)	EI (V)	EI (Kwh)
92.1	125	210	62,5	5	27	15	0,58
88.1	175	290	87,5	5	38	15	0,8
88.2	250	420	125	5	55	15	1,12
88.3	350	580	175	5	77	15	1,54
88.4	400	670	200	5	88	15	1,72
88.5	500	830	250	5	111	15	2,1
88.7	700	1160	350	5	155	15	2,87
88.10	1 000	1 670	500	5	222	15	4